

DOCTOR WRAPS

Slimming bandage for whole body line



No Needle,
No Pain
Bandage therapy!

DOCTOR WRAPS features

- Easy application: No training, No shower
- Wide range of treatment to treat all the body parts
- Combination with DOCTOR LIFE drainage system
- Body size reduction and Moisturizing and toning of the skin

(8 treatments program)

THERMO CELL
Drainage & Cellulite

LIPO CELL
Tough cellulite

Cellulite

The brush

for dry peeling stimulates the microcirculation, the nerve endings and the lymphatic system besides dry peeling effect. it tones up, gives energy or relaxes according to the methods of execution.



DOCTOR LIFE[®] TOTAL SLIMMING SOLUTION

This slimming solution is effective and comfortable treatment process to complete "Anti-cellulite" without yo-yo.

ICE WRAP _ Reduction and drain away of fat cells

STEP 1

DOCTOR WRAPS + Air Compression System
_Dissolution & Drainage

STEP 2

STEP 3

DOCTOR WRAPS

SLIMMING CELLULITE SOLUTION

SLIMMING PROGRAM

Reduce Size! Abdomen, Thigh, Arm
Body Shape Slimming Effect!
Body Line Up Lift Effect!



- Skin Dehydration
- Flaccidity
- Orange skin
- Adiposity
- Fibrous cellulite
- Edematous cellulite
- Hydric retention

DOCTOR WRAPS SLIMMING SOLUTION

DOCTOR WRAPS is 8 session program to optimize slimming solution. DOCTOR WRAPS is able to perform moisturizing, toning, with tensor effect, draining and ANTICELLULITE treatment.

DOCTOR

What is DOCTOR WRAPS?

DOCTOR WRAPS is the 8 bandages program to optimize the slimming dissolution. It is composed of 8 bandages with three different kind of active ingredients and two physical brushes in a kit. DOCTOR WRAPS is able to perform moisturizing, toning, draining and Anti-cellulite treatments and provides effective results improving Overweight, Flaccidity, Cellulite, Orange peer, Dehydration and Water retention. The brush for dry peeling stimulates the microcirculation, the nerve endings and the lymphatic system besides dry peeling effect. It tones up, gives energy or relaxes according to the methods of execution.

Which body areas can be treated with DOCTOR WRAPS?

Breast, Legs, Abdomen, Thigh, Arms, Neck and Shoulder can be treated with DOCTOR WRAPS



DOCTOR WRAPS



Draining

ACTIVE DRAIN
Drainage

DS MAREF
DAESUNG MAREF CO.,LTD.

298-24, Gongdan-ro, Gunpo-shi, Gyeonggi-do, 435-862, Korea
Tel: +82-31-459-7211 Fax: +82-31-459-7215
E-mail: ds@dsmaref.com www.dsmaref.com

Korean clinical date

(July-October, 2013/20-60 ages, 66 women)

There was 1 month treatment (2 times per week – 8 sessions) choosing one of following programs.

- (1) Bandage (1 box , 8 package, 16 rolls)
- (2) Bandage + IPC (DL1200L)
- (3) Bandage + IPC (DL1200L) + LLD Inj.

< Result >

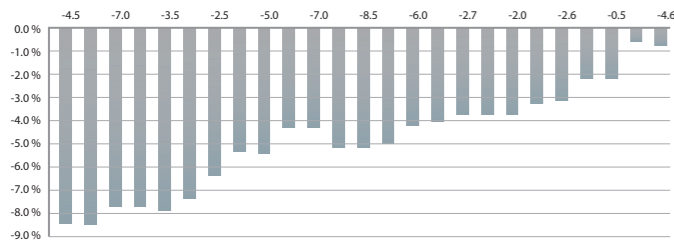
| | |
|---------|------------------------------------|
| abdomen | -4.3cm Reduction (-3.0cm ~ -8.5cm) |
| thigh | -2.2cm Reduction (-1.2cm ~ -3.0cm) |
| arm | -1.8cm Reduction (-0.5cm ~ -3.7cm) |

[November, 10th, 2013

/ Korean Academy of Obesity & aesthetic Treatment announcement]

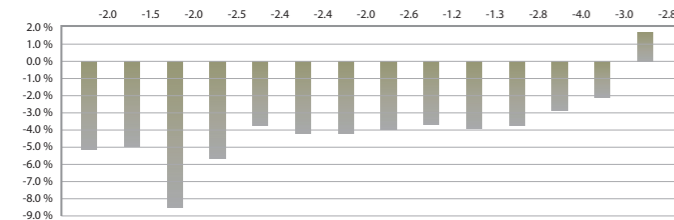
Abdomen 8 sessions : size and reduction rate

Abdomen reduction rate (%) & Size (cm)



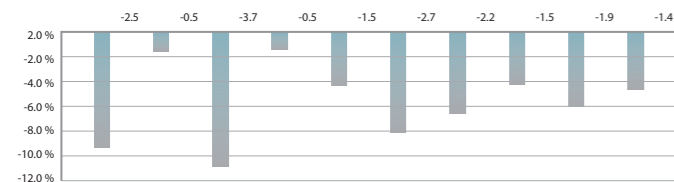
Thigh 8 sessions : size and reduction rate

Thigh reduction rate (%) & size (cm)



Arm 8 sessions : size and reduction rate

Arm reduction (%) & size (cm)



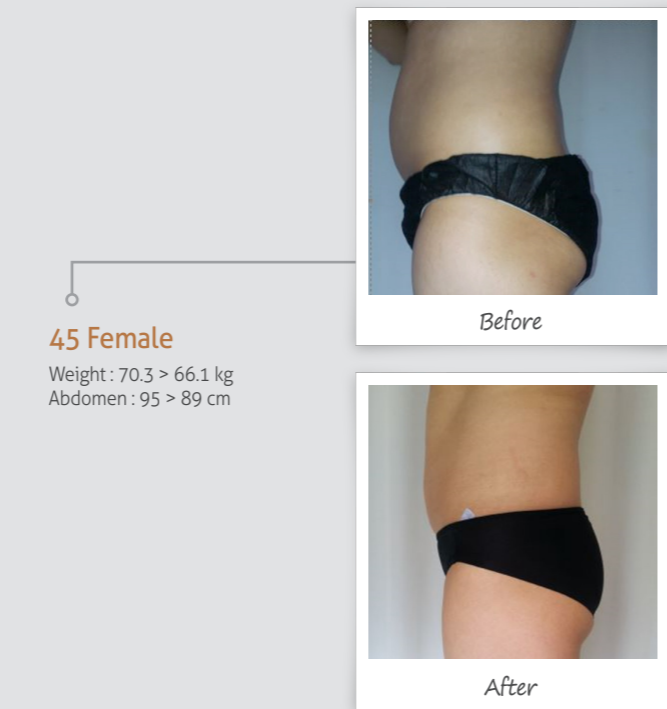
28 Female

Weight : 63 > 59.3kg
Thigh : 58 > 55.5 cm



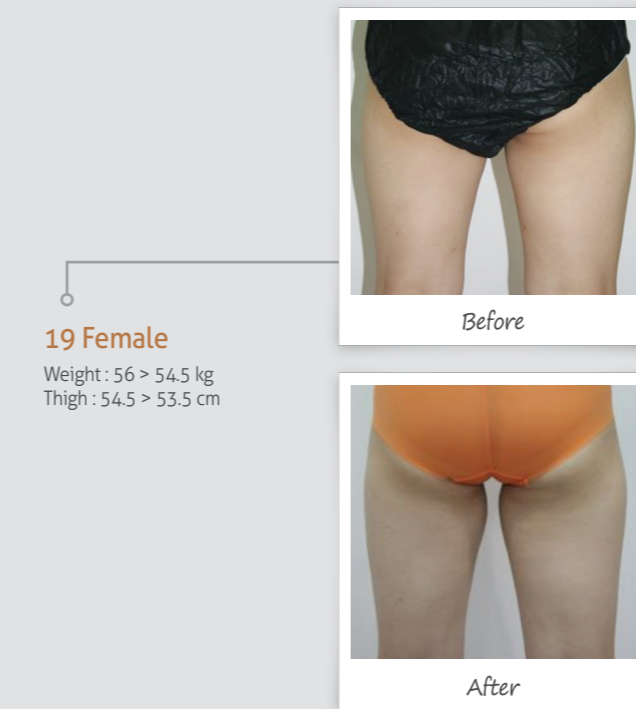
50 Female

Weight : 65 > 62.7 kg
Abdomen : 90.5 > 83 cm



45 Female

Weight : 70.3 > 66.1 kg
Abdomen : 95 > 89 cm



19 Female

Weight : 56 > 54.5 kg
Thigh : 54.5 > 53.5 cm

DOCTOR WRAPS - Bandage Type

Active Drain
Moisture drainage

It contrasts efficiently water retention giving to the tissues a much more compact and tonic aspect; it demineralizes the skin making it bright and vital.

Thermo cell
Anti-cellulite

It stimulates metabolic exchanges and oxygen consumption in the fat tissues; in contrasts the stagnation of liquids and toxins, main cause of the cellulite process. (Caffeine, Centella Asiatica, Fucus Vesiculosus extract) It has warming effects.

Lipo cell
Local lipolysis

PPC, Caffeine, Mint, ginseng etc. such ingredient effects on fats. Skin lifting and helping lymph circulation.

Reduce size
Abdomen
Thigh, Arm

Body Shape
Slimming
Effect !

Body Line Up
Lift Effect !

- ➔ It is effective on body line, edema treatment by lymph circulation.
- ➔ It is effective in size reduction and body shape improvement. (Not only abdomen but also arm and thigh where subcutaneous fat is spread) Especially lower body overweight patients get high satisfaction.
- ➔ Good to orange peel skin improvement.
- ➔ Patient can feel mental relaxation during treatment.
- ➔ It's available to combine with existing obesity devices in clinic. (Economical..!)



- ➔ Not only obesity clinic, but also skin or plastic surgery clinic can add this program.
- ➔ It can cover whole body treatment which is hygienic package (one box / one-person use)

